

RS 1000÷1200 SERIES

PRODUCT OVERVIEW

High Power Monobloc Gas Burners



RIELLO
Energy For Life

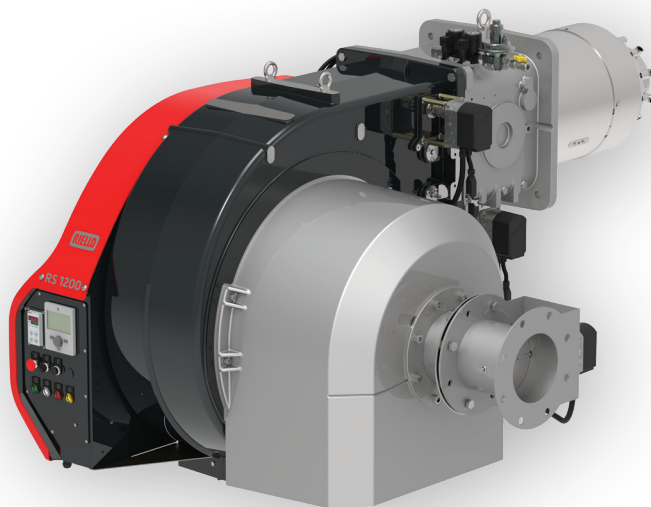
A Carrier Company

www.riello.com

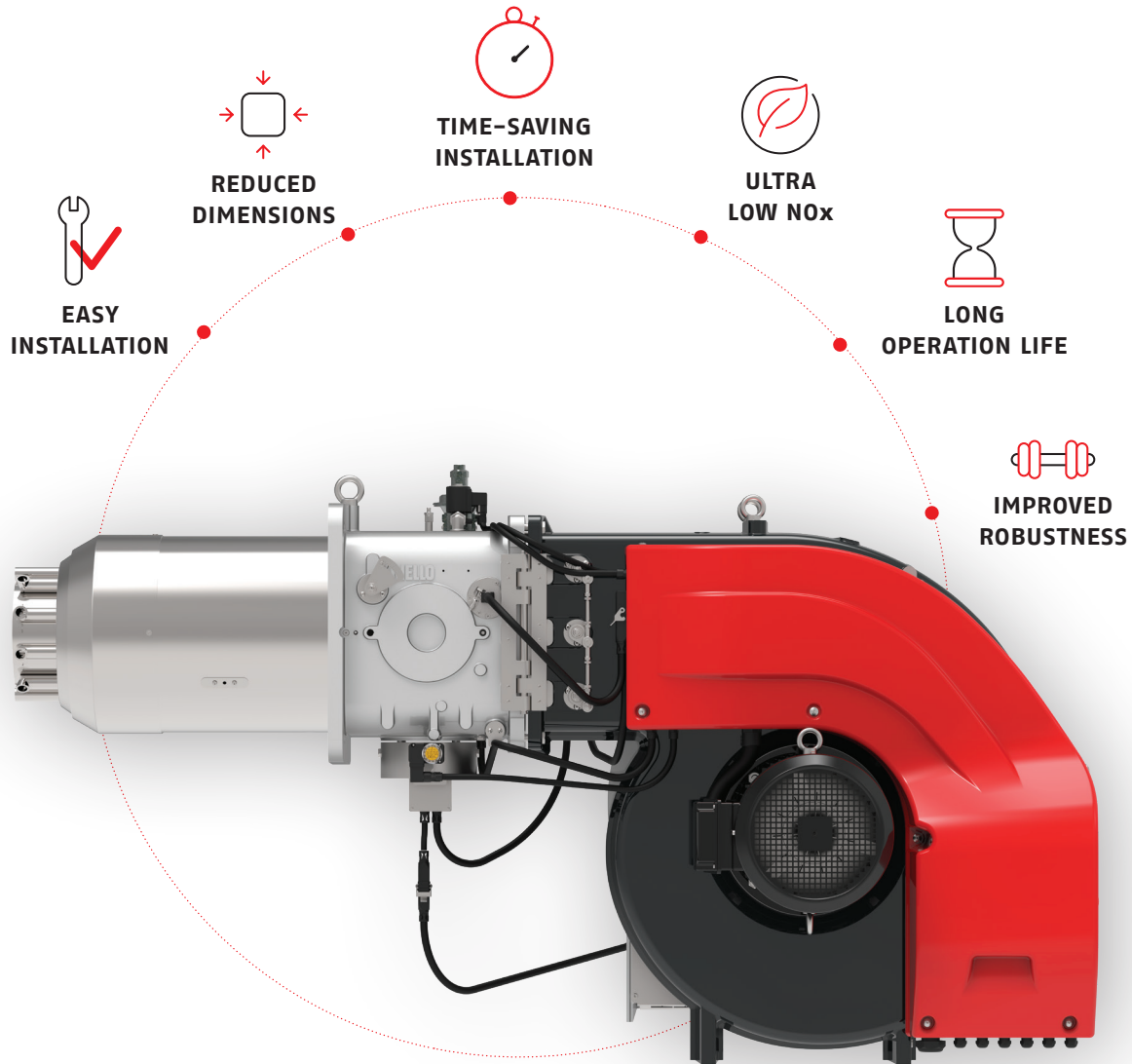
RIELLO RS 1000÷1200 PERFORMANCE, DESIGN AND STYLE

THE HIGH-POWER MONOBLOC GAS BURNERS RS 1000÷1200, WITH A MAXIMUM OUTPUT OF 11.100 KW, HAVE BEEN UPGRADED WITH A NEW LAYOUT THAT GIVES THEM A NEW INNOVATIVE STYLE, IMPORTANT NEW FEATURES AND A BETTER PERCEIVED USABILITY, EVEN BETTER THAN BEFORE

Starting from the traditional layout, in line with the usual solutions in common with the entire power range of RIELLO monobloc burners, a new disruptive concept has been introduced on these high-power models. Since the beginning of its industrial development, RIELLO has looked for a connection between industry and style in order to help maintain the reputation of Italian design on the world stage; once again, the NEW RS 1000÷1200 models preserve the marriage between performance and design, giving the product range an unmistakable style.



- The development of the burner started with the goal of giving the new model a heavy-duty design, with increased robustness, to make it more suitable for heavy industrial applications.
- Various solutions and product upgrades have been introduced to give a more compact size, improve and facilitate in handling and increase the usability of the product.
- The new layout allows a better burner's handling and easy accessibility to the components, that are in a better position to allow an easier maintenance.



ADVANTAGES

- > New control panel design to achieve:
 - smaller dimensions
 - better burner's handling
 - improved robustness
 - easy accessibility to electrical components
- > Advanced head design provides Low NOx emissions
- > Ultra Low NOx emissions by FGR technology
- > Excellent output control thanks to new LMV6 fuel-air ratio control
- > Variable speed drive technology available for optimizing the energy savings
- > Simplified, time triggered, flue gas recirculation control
- > Modulating Operation by RWF5 PID logic regulator

RIELLO RS 1000÷1200 NEW LMV 6 ELECTRONIC CAM

THE NEW RS 1000÷1200 MODELS ARE EQUIPPED WITH THE NEW AIR-FUEL RATIO CONTROL LMV 6, TO HAVE AN EXCELLENT OUTPUT CONTROL AND A COMFORTABLE USER INTERFACE.

The new LMV6 control is the concentrate of decades of knowledge and innovative solutions and represents the latest technical developments into a powerful burner management system, that enables to face future challenges. A large display makes the interaction between burner and user faster and easier than ever before, with an intuitive graphics and icon which simplify system handling. The HMI also increases operational safety by requesting additional confirmation of safety-critical changes. Guided commissioning makes finding the right burner settings faster, easier, and more cost-effective. HMI features will make work substantially faster and more efficient.



MAIN FEATURES OF LMV6 ON RS 1000÷1200 BURNERS

- Graphical Human Machine Interface (HMI)
- Chinese language integrated to improve even more the user experience
- Burner control including valve proving system for gas valves
- Electronic fuel-air ratio control for three actuators
- Time triggered flue gas recirculation

RIELLO RS 1000÷1200 PRODUCT RANGE

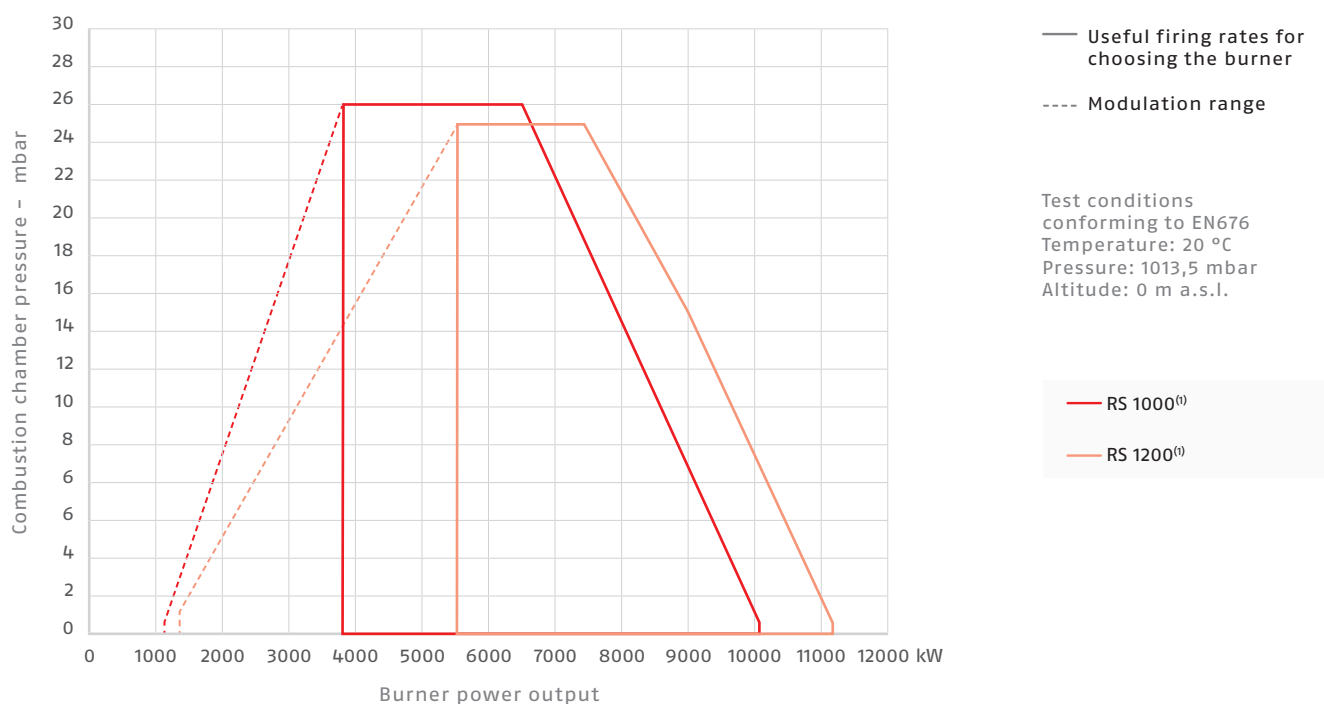
THE SERIES COVERS A POWER RANGE FROM 1.300 TO 11.100 KW AND IT HAS BEEN DESIGNED FOR USE IN HOT WATER BOILERS, INDUSTRIAL BOILERS OR STEAM GENERATORS. THE NEW MODELS ARE AVAILABLE WITH LOW NOX AND ULTRA LOW NOX FGR COMBUSTION AND OPERATION IS MODULATING WITH ELECTRONIC CAM CONTROL, ALSO AVAILABLE WITH VARIABLE SPEED DRIVE.

SERIES	EMISSION	MODEL	OUTPUT (KW)	OPERATION
RS 1000÷1200/E BLU	Low NOx	RS1000/E BLU	1300/3800-10100	Modulating electronic cam
		RS1200/E BLU	1500/5500-11100	
RS 1000÷1200/E FGR	Ultra Low NOx	RS1000/E FGR	1100/4000-10100 ⁽¹⁾	
		RS1200/E FGR	1500/5500-11100 ⁽¹⁾	
RS 1000÷1200/EV BLU	Low NOx	RS1000/EV BLU	1300/3800-10100	Modulating electronic cam with variable speed drive
		RS1200/EV BLU	1500/5500-11100	
RS 1000÷1200/EV FGR	Ultra Low NOx	RS 1000/EV FGR	1100/4000-10100 ⁽¹⁾	
		RS 1200/EV FGR	1500/5500-11100 ⁽¹⁾	

/E _ Modulating electronic cam

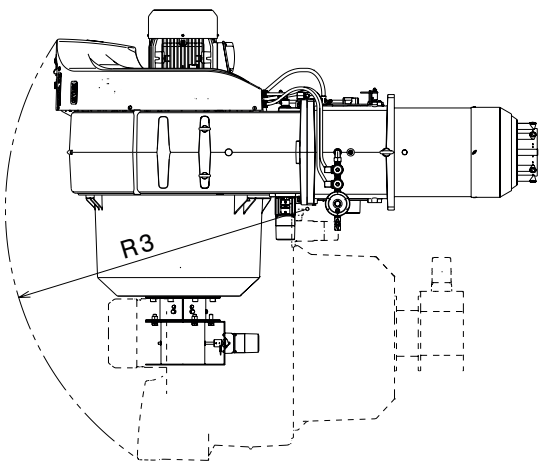
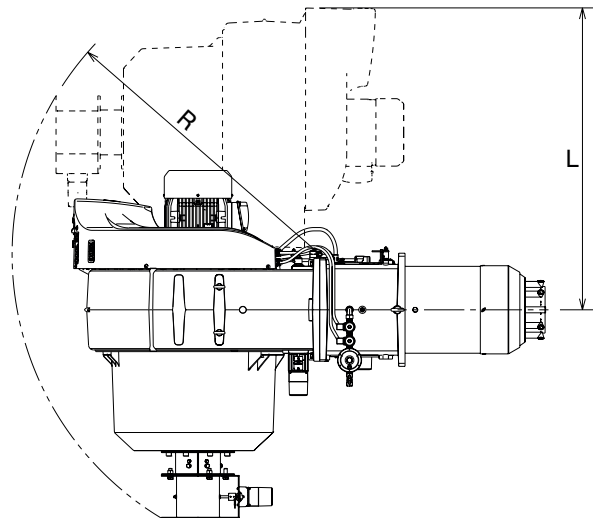
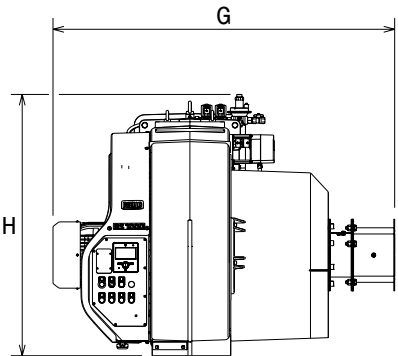
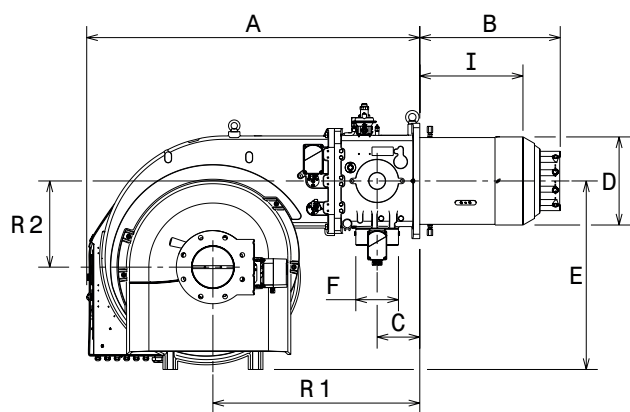
/EV _ Modulating electronic cam with variable speed drive

FIRING RATES



(1) Power range referred to a Low NOx performance conforming to the Class 3 of EN676 European Standard, with 0% of Flue Gas Recirculation; by increasing the recirculation % in order to achieve an Ultra Low NOx emission the burner's maximum output will be reduced

RIELLO RS 1000÷1200
OVERALL DIMENSIONS



MODEL	A	B	C	D	E	F	G	H	I	L	R	R1	R2	R3
RS 1000 FGR	1562	659	200	Ø 413	885	DN80	1630	1245	485	1422	1442	970	404	1385
RS 1200 FGR	1562	659	200	Ø 456	885	DN80	1630	1245	463	1422	1442	970	404	1385
RS 1000 BLU	1562	659	200	Ø 413	885	DN80	1517	1215	485	1422	1275	-	-	1385
RS 1200 BLU	1562	659	200	Ø 456	885	DN80	1517	1215	463	1422	1275	-	-	1385

Dimension in mm

RIELLO ENERGY FOR A HEALTHY LIFE

MORE THAN 100 YEARS EXPERIENCE

Each RIELLO burner is the result of a long experience in design and manufacture, coupled with leading technology and flexible burner design. RIELLO has always believed and invested in the search for new materials and in the development of more advanced combustion technology.

OUR PRESENCE

RIELLO, World Leader in the production of gas, oil, dual fuel and Low NOx burners delivers outstanding performance across the full range of residential and commercial heating applications, as well as in industrial processes.

The RIELLO Combustion Research Centre represents one of the most modern facilities in Europe and one of the most advanced in the world for the development of the combustion technology.

Today, the company's presence on worldwide markets is distinguished by a well-structured and efficient sales network, alongside many important Training Centres located in various countries to meet its customers' needs.

With headquarters in Legnago (Northern Italy), RIELLO has been manufacturing premium quality burners for more than 100 years.

The manufacturing plant is equipped with the most innovative systems of assembling lines and modern manufacturing cells for a quick and flexible response to the market.

RIELLO

RIELLO S.p.A.
Via Ing. Pilade RIELLO, 7
37045 Legnago (VR) Italy
tel. +39 0442 630111



©2023 Carrier. All Rights Reserved.
All trademarks and service marks referred
herein are property of their respective owners.

Since the Company is constantly engaged in the production improvement,
the aesthetic and dimensional features, the technical data, the equipment and the accessories can be changed.