






BURNERS FOR OVENS

Product Overview

GAS BURNERS

The gas burners for ovens are available in the Riello 40, Gulliver and RS series.

	MODEL	OUTPUT (kW)	OPERATION	ELECTRICAL POWER SUPPLY
	FS3	11 ÷ 35	ONE STAGE	A
	FS5	23 ÷ 58	ONE STAGE	A
	FS8	46 ÷ 93	ONE STAGE	A
	FS10	42 ÷ 116	ONE STAGE	A
	FS20	81 ÷ 220	ONE STAGE	A
	FS5D	12/23 ÷ 58	TWO STAGE	A
	FS20D	28/81 ÷ 220	TWO STAGE	A
	GS10/M	22/42 ÷ 105	TWO STAGE PROGRESSIVE MODULATING	A
	GS20/M	43/82 ÷ 194	TWO STAGE PROGRESSIVE MODULATING	A
	BS1F	16 ÷ 52	ONE STAGE	B
	BS2F	35 ÷ 91	ONE STAGE	B
	BS3F	65 ÷ 200	ONE STAGE	B
	BS4F	110 ÷ 250	ONE STAGE	B
	BS3DF	65/75 ÷ 189	TWO STAGE	B
	BS4DF	110/140 ÷ 246	TWO STAGE	B
	RS5F	160 ÷ 330	ONE STAGE	B
	RS5DF	160/208 ÷ 345	TWO STAGE	B
	BS2/M	26/49 ÷ 91	TWO STAGE PROGRESSIVE MODULATING	A
	BS3/M	48/79 ÷ 195	TWO STAGE PROGRESSIVE MODULATING	A
	BS4/M	68/140 ÷ 250	TWO STAGE PROGRESSIVE MODULATING	A
	RS 34/1 MZ	70 ÷ 390	ONE STAGE	B
	RS 44/1 MZ	100 ÷ 535	ONE STAGE	B
	RS 34 MZ	70/125 ÷ 390	TWO STAGE	B
	RS 44 MZ	100/200 ÷ 535	TWO STAGE	B/C
	RS 50	116/290 ÷ 580	TWO STAGE	D/E
	RS 64 MZ	150/400 ÷ 850	TWO STAGE	D
	RS 70	192/465 ÷ 814	TWO STAGE	D/E
	RS 34/M MZ	70/125 ÷ 390	TWO STAGE PROGRESSIVE MODULATING	B/C
	RS 44/M MZ	100/200 ÷ 535	TWO STAGE PROGRESSIVE MODULATING	D/E
	RS 50/M	85/290 ÷ 580	TWO STAGE PROGRESSIVE MODULATING	D
	RS 64/M MZ	150/400 ÷ 850	TWO STAGE PROGRESSIVE MODULATING	D/E
	RS 70/M	135/465 ÷ 814	TWO STAGE PROGRESSIVE MODULATING	D/E

The MZ version models are Low NOx, in accordance with class 2 of the EN 676 Standard.

The following types of electrical supply are available:

- A: 1/230 V/50 Hz
- B: 1/220-230 V/50-60 Hz
- C: 3/220-400V/50-60 Hz
- D: 3/230-400 V/50 Hz
- E: 3/208-230 V/380-460 V/60 Hz.

All the gas burners are supplied with a gas train. In addition, the burners have a wide range of functions, either as standard or supplied as a kit, including:

- operation with LPG
- operation with town gas and biogas
- extension or reduction of the length of the combustion head
- remote reset of the control box
- visual self-diagnosis or self-diagnosis via the computer
- continuous ventilation
- adjustable post-ventilation
- exclusion of the pre-ventilation on the Gulliver series ("Quick Start" kit)
- hour-counter.

All the Riello gas burners comply with the EN 676 standard and are approved according to the European Directives 2006/42/EC, 2009/142/EC, 2014/30/UE and 2014/35/UE.

PREMIX BURNERS

The “premix” gas burners are especially suitable for applications requiring the integration of the burner, to obtain very limited maximum overall dimensions. Further advantages of these burners are the high modulating ratio and the quiet operation.

Riello Burners markets premix burners exclusively in the configuration envisaged for each specific application. The premix models cannot therefore be ordered like standard products, but only in the versions already verified in combination with the applications to be used.

The combustion heads of the Riello Burners premix burners are customised in a cylindrical or front form. In addition, they are characterised by a “seamless knitted wire” (patented by Riello) free of welded seams, thereby eliminating an element of notable criticality in situations of high thermal stress.

The range of premix burners is available from 4 to 1000 kW, with one stage, two stage or modulating operation, with a variable speed drive motor, gas train integrated in the burner, and air-gas mixing in the fan suction line circuit.

All the burners of the RX series can be easily modified, even on-site, to work with LPG.

RX SERIES MODELS

RX 25-35-70-90-120-150 S/PV



Output:	up to 150 kW
Operation:	One stage, Two stage, Modulating
Type of modulation:	Through fan variable speed drive
Motor:	Brushless
Position of air-gas pre-mixing:	Fan inlet
Design:	Without cover
Type-approval:	On the system or EN 676




RX 150 - 180 - 250 - 360 - 500 - 700 - 850 - 1000 S/PV



Output:	up to 1000 kW
Operation:	One stage, Two stage, Modulating
Tipo di modulazione:	Through fan variable speed drive
Motore:	Brushless
Posizione miscelazione aria-gas:	Fan inlet
Estetica:	With cover
Omologazione:	EN 676

LIGHT OIL BURNERS

The light oil burners for ovens are available in the Riello 40, Gulliver and RL series. Models of the Riello 40 and RL series are also available, for operation with kerosene.

	MODEL	OUTPUT (kW)	OPERATION	ELECTRICAL POWER SUPPLY
<div>RIELLO 40 SERIES</div> <div></div>	F5	30 ÷ 60	ONE STAGE	A
	F10	54 ÷ 107	ONE STAGE	A
	F20	95 ÷ 202	ONE STAGE	A
<div>GULLIVER SERIES</div> <div></div>	RG1F	32 ÷ 60	ONE STAGE	B
	RG2F	47 ÷ 119	ONE STAGE	B
	RG3F	83 ÷ 178	ONE STAGE	B
	RG4F	118 ÷ 237	ONE STAGE	B
	RG5DF	95/142 ÷ 296	TWO STAGE	B
<div>RL SERIES</div> <div></div>	RL 34/1	107 ÷ 398	ONE STAGE	B
	RL 34 MZ	97/154 ÷ 395	TWO STAGE	B
	RL 44 MZ	155/235 ÷ 485	TWO STAGE	B/C
	RL 50	148/296 ÷ 593	TWO STAGE	D/E
	RL 64 MZ	200/400 ÷ 820	TWO STAGE	D
	RL 70	255/474 ÷ 830	TWO STAGE	D/E
	RL 28/M	95/166 ÷ 332	TWO STAGE PROGRESSIVE MODULATING	B
	RL 38/M	101/267 ÷ 450	TWO STAGE PROGRESSIVE MODULATING	D/E
	RL 50/M	130/296 ÷ 593	TWO STAGE PROGRESSIVE MODULATING	D/E
	RL 70/M	261/474 ÷ 1043	TWO STAGE PROGRESSIVE MODULATING	D/E

The models of the Gulliver and RL...MZ series are Low NOx, in accordance with class 2 of the EN 267 standard.

The following types of electrical supply are available:

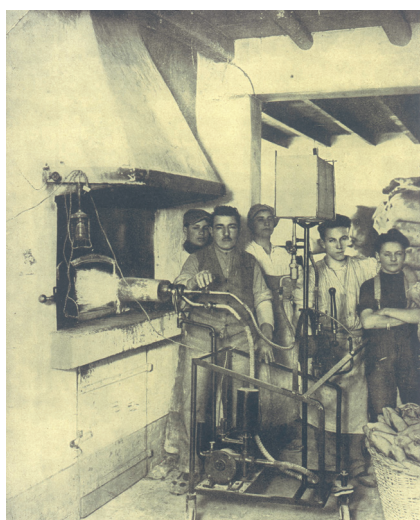
- A: 1/230 V/50 Hz
- B: 1/220-230 V/50-60 Hz
- C: 3/220-400V/50-60 Hz
- D: 3/230-400 V/50 Hz
- E: 3/208-230 V/380-460 V/60 Hz.

The light oil burners have a wide range of functions, either as standard or supplied as a kit, including:

- operation with biodiesel
- extension or reduction of the length of the combustion head
- remote reset of the control box
- visual self-diagnosis or self-diagnosis via the computer (Gulliver and RL series)
- continuous ventilation (Gulliver and RL series)
- adjustable post-ventilation (Gulliver and RL series)
- extension of the pre-ventilation (RL series)
- hour-counter.

BURNERS FOR OVEN

The story of Riello began with the development of burners for producing bread. After a period of more than 85 years, during which the company has continuously pursued high standards of quality, reliability and energy savings, Riello S.p.A., under the trademark Riello Burners, offers a complete range of burners and accessories for the combustion of gas and light oil, designed for the equipment for the artisan and industrial production of bread, pizzas and every type of leavened product and confectionery.



Fire tests on the first burner designed for bread ovens (1923).



Preparing the prototype of the first burner for bread ovens (1923).

The use of the burners mentioned in this document refers to convection ovens (rotating or fixed pans), slab-based ovens, conduction and irradiation ovens, as well as industrial ovens of the continuous type, tunnel-based and with steam pipes.



Riello Burners a world of experience in every burner we sell.

05/2017

P000004UK01



[1]



[2]

Across the world, Riello sets the standard in reliable and high efficiency burner technology.

With burner capacity from 5 kW to 48 MW, Riello gas, oil, dual fuel and Low Nox burners deliver unbeatable performance across the full range of residential and commercial heating applications, as well as in industrial processes.

With headquarter in Legnago, Italy, Riello has been manufacturing premium quality burners for over 90 years. The manufacturing plant is equipped with the most innovative systems of assembling lines and modern manufacturing cells for a quick and flexible response to the market.

Besides, the Riello Combustion Research Centre, located in Angiari, Italy, represents one of the most modern facility in Europe and one of the most advanced in the world for the development of the combustion technology.

Today, the company's presence on worldwide markets is distinguished by a well-constructed and efficient sales network, alongside many important Training Centres located in various countries to meet its customers' needs. Riello has 13 operational branches abroad (in Europe, America and Asia), with customers in over 60 countries.

[1] BURNERS PRODUCTION PLANT
S. PIETRO, LEGNAGO (VERONA) – ITALIA

[2] HEADQUARTER BURNERS DIVISION
S. PIETRO, LEGNAGO (VERONA) – ITALIA

RIELLO S.p.A. – 37045 Legnago (VR) – Italy
tel. +39 0442 630111 – fax: +39 0442 21980
www.riello.com

Since the Company is constantly engaged in the production improvement, the aesthetic and dimensional features, the technical data, the equipment and the accessories can be changed. This document contains confidential and proprietary information of RIELLO S.p.A. Unless authorised, this information shall not be divulged, nor duplicated in whole or in part.

RIELLO