

CONDEXA PRO
NEW GENERATION IN THE BOILER ROOM



RIELLO AND THE THERMAL POWER PLANT

Almost a century of history links Riello to the world of the thermal power plant. The boiler room has evolved over time, moving towards ever greener types of fuel, more efficient and intelligent generators, cleaner emissions. Renewing the heating plant means making the most of the energy used and creating a technological, performing and clean environment. Being a technological and proactive force is one of the characteristics of the leader. Then Riello designed Condexa Pro, the new power condensing wall hung solution, to go beyond ... once again.

CONDEXA PRO IS RENEWED

Condexa Pro has for years been a distinctive element for Riello and a guarantee in the thermal power plant. Our engineers, however, have accepted the challenge to also renew an established product and the new Condexa Pro is born. All components have been revised and redesigned: the heat exchanger operates with surface temperatures reduced by 18% to reduce the thermal stress and increase the duration ; the already excellent polluting emissions fell below the most restrictive limits (Class 6 NOx according to UNI EN 297); the control of the system is 10 times faster than the previous one; 150 new accessories and a dynamic configurator have been created to support the designer in customizing the system.

KNOWING CONDEXA PRO

Condexa Pro is the new range of gas condensing power wall hung units that can be installed individually or in a battery, specifically designed to guarantee maximum installation modularity with minimum space, to reduce the need for space in new thermal power plants and simplify the requalification of existing ones.

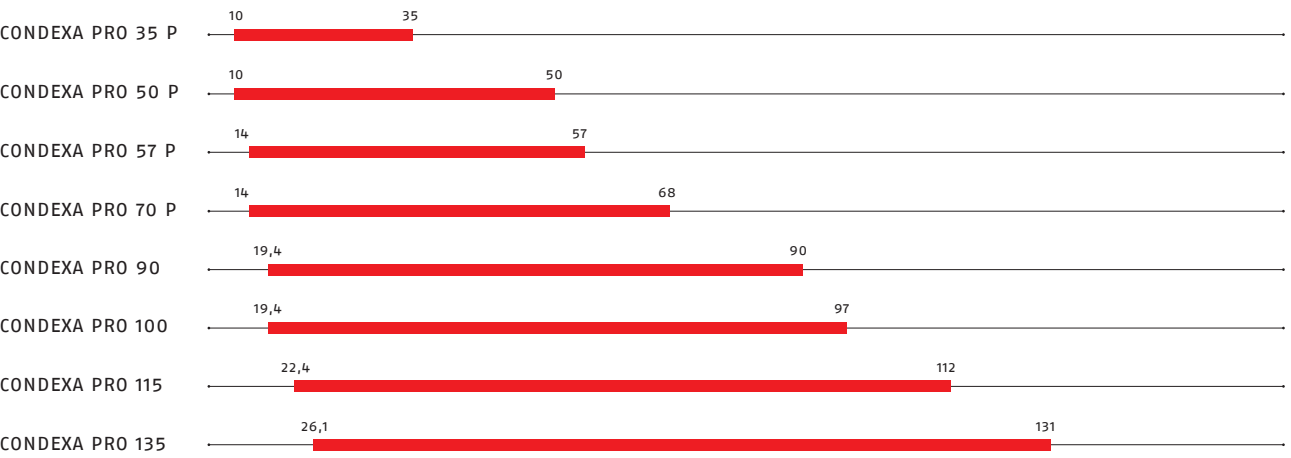
The range goes from 35 to 131 kW of power in various settings. Up to 70 kW the high head pump is on board while the higher power units can be equipped with a pump or, in the case of cascade installation, with a 2-way shut-off valve. The machine and system controls allow the distribution of heat and the management of different types of distribution over several modules. In modular applications it is possible to convey both exhaust and intake exhaust and the single versions can also be installed outdoors in partially protected areas.

The hydraulic manifolds of the modular versions are positioned below the generators reducing the overall dimensions and unloading the weight on the ground. Compactness, versatility and electronic management are combined with the patented stainless steel heat exchanger with single and double principle and with the premixed burner with a wide modulation range.

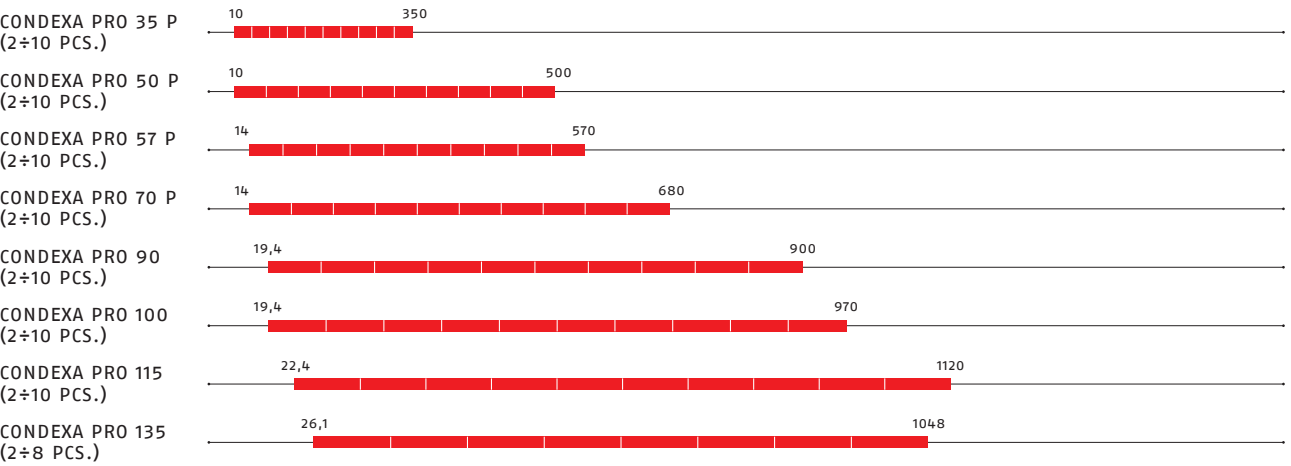
EXCELLENCE AND FLEXIBILITY

The strength of Condexa Pro is the extreme flexibility of the system: thanks to the wide range of accessories, the basic unit transforms from a single boiler to a cascade module, from an internal generator to an outdoor solution, from an open chamber to a sealed chamber, and so on, to give life to about 1000 possible installations that allow the specifier and the Installer to solve any situation and installation complexity.

STAND ALONE APPLICATION



CASCADE APPLICATION



RIELLO S.p.A. - 37045 Legnago (VR)
tel. +39 0442 630111 - fax +39 0442 630371
www.riello.com

As the Company is constantly involved in the continuous improvement of all its production, aesthetic and dimensional characteristics, technical data, equipment and accessories may be subject to change.

RIELLO

cod. 27014551 rev.00 05/2018

CONDEXA PRO
EXCELLENCE AND FLEXIBILITY IN THERMAL POWER PLANT

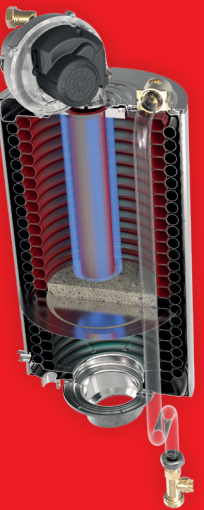


RIELLO
Energy For Life

INGREDIENTS OF SUCCESS

THE BEATING HEART

The Condexa Pro heat exchanger is the technological core of the system and it has been designed in absolute symbiosis with the premixed gas burner. The best is the result of the synergy between combustion and heat exchange transformation of the chemical energy of the fuel into thermal energy useful transmitted to water. The exchanger is made of precious steel stainless steel to guarantee inalterability and reliability over time. The shape, the path water and the passage sections have been optimized to limit losses loading and ensuring the best heat transfer. The result is one more homogeneous wall temperature, synonymous with longer life and better yield. The premixed burner is designed to contain polluting emissions below the most restrictive European limits, allowing at Condexa Pro to be in Class 6 NOx according to UNI EN 297, the best expected.



THE BRAIN OF THE SYSTEM

Condexa Pro electronic regulation has complex tasks. It must monitor and quickly process a lot of information, coming from the generators and the plant, to guarantee the best comfort to the user with the least energy consumption and maximum operational safety. The Condexa Pro control has been totally renewed with great attention to the refinement of the calculation programs, the efficiency of the detection and the processing speed. The operating logic of the boiler in "managing" or "depending" mode, in case of applications in cascade, they are integrated in the card, guaranteeing the unit maximum flexibility of use. The interface display is backlit, intuitive and multilingual, to simplify the dialogue between the machine and the operators.



SIMPLIFY COMPLEXITY

Riello supplies with Condexa Pro an articulated range and tools for taming it. The choice of the solution that best interprets the characteristics of the project can be a burdensome activity with a certain degree of complexity, which Riello simplifies by providing a dynamic configuration system. Starting from the basic information on the total thermal power required, the Configurator gradually requests further specifications and proposes progressively possible solutions. The tool thus guides the designer towards the best technical choice, which can be translated directly into an estimate and accompanied by product documentation. Once again Riello transforms complexity in a continuous challenge and therefore in an opportunity.



RIELLO

RIELLO



CONDEXA PRO



CONDEXA PRO ONE PRODUCT, THOUSAND SOLUTIONS



STAND ALONE

THE STRUCTURE CAN SUPPORT THE MODULE ALSO IN CASE OF SINGLE INSTALLATION, WHEN IT IS NOT POSSIBLE THE WALL FASTENING OR WHEN YOU OPT FOR THE SOLUTION WITH PLATE EXCHANGER, ENCLOSED IN THE INSULATED LOWER COVER.



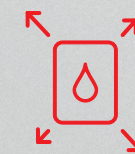
KILOWATT ALWAYS AVAILABLE

THE CONDEXA PRO MODULE IS DESIGNED TO WORK IN CASCADE TO MAKE THERMAL POWER PLANTS. THE INTEGRATED LOGICAL MANAGING-DEPENDENT GUARANTEES THE INTERCHANGEABILITY MODULES AND SERVICE CONTINUITY OF THE SYSTEM. THE LOWER COVER, IN LINE WITH THE BOILER AESTHETICS, PROTECTS AND INSULATES THE COLLECTORS AND ENABLES A CLEAN AND PROFESSIONAL INSTALLATION.



CONCENTRATED POWER

BACK TO BACK CONFIGURATION OPTIMIZES THE USE OF SPACE IN THE BOILER ROOM AND ENABLE TO GET HIGH POWER SOLUTIONS WITH REDUCED IMPACT TO THE GROUND. IN CASCADE INSTALLATIONS THE INTERFACE BETWEEN PRIMARY CIRCUIT AND SECONDARY CIRCUIT CAN BE MADE WITH HYDRAULIC SEPARATOR AND WITH EXCHANGER AND PLATES.



CONDEXA PRO IS ALWAYS THE RIGHT SOLUTION

Condexa Pro is the elementary module that can be wall mounted individually and in over 1000 combinations. The already complete standard equipment allows quick replacements and immediate plant upgrades. It is equipped with a single or double principle exchanger and an on-board pump up to 70 kW.



WEATHER NO PROBLEM

THE RULES THAT CONTROL THE REALIZATION OF THE GAS THERMAL HEATING PLANTS DO OFTEN FORCE TO EXPENSIVE MAINTENANCE, SOMETIMES NOT CONVENIENT. THE SOLUTION IS TO INSTALL THE UNIT OUTSIDE AND, IN PARTIALLY PROTECTED PLACES. THE CONDEXA PRO KIT FOR SINGLE BOILER RAISE THE PROTECTION LEVEL AT IPX5D.



LESS LOSSES

IN ANY CONDEXA PRO MODULE THE KIT, THAT ALLOWS TO EXTRACT AIR FROM THE OUTSIDE OF THE HEATING SYSTEM, CAN BE INSTALLED. THE DUCTED SUCTION MAKES "TYPE C" SOLUTIONS WHERE REQUIRED BUT, ESPECIALLY, AVOIDS THE COOLING OF THE ROOM AND REDUCES THE LOSSES.



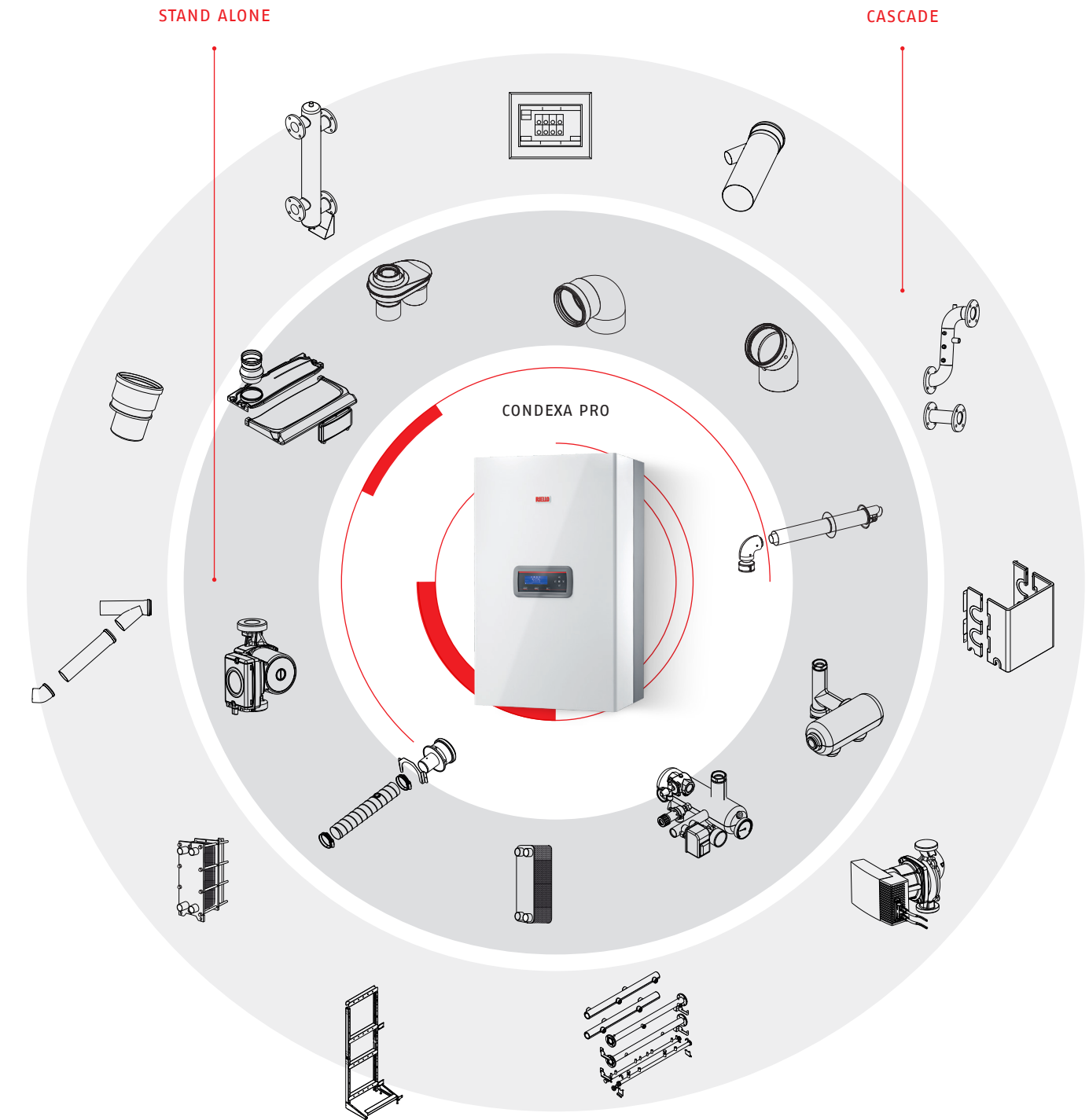
SAFETY ON DEMAND

THE KIT INSTALLED UNDER CONDEXA PRO IS A MASTERPIECE OF COMPACTNESS AND IS EQUIPPED WITH THE INSTRUMENTS AND SAFETIES PROVIDED BY THE INSTITUTE. IT CAN ALSO BE COMBINED WITH IN HORIZONTAL CIRCUIT BREAKER IN ORDER TO ELIMINATE THE DISTURBANCES INDUCED BY RESIDUAL HEAD OF BOILER AND PLANT. THE AD HOC COVER ALLOWS TO GIVE CONTINUITY TO THE AESTHETICS OF THE BOILER.

ACCESSORIES



Condexa Pro is not just a boiler but a **world of solutions** that can be built from the basic configuration. The accessories are specially designed to maximize the flexibility of the system and to obtain the ideal solution for every installation requirement. The simplest configuration can become more and more complex, like many pieces of a puzzle that the installer can compose.



RIELLO