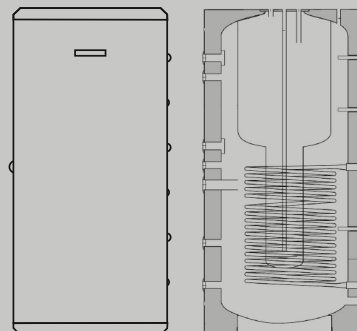




# Riello 7200 Kombi Plus

Combined storage systems

Combined storage system



**RIELLO**  
Energy For Life

# Riello 7200 Kombi Plus

## PRODUCT DESCRIPTION

Riello 7200 Kombi Plus is a combined storage system for heating integration and production of domestic hot water, thanks to the presence of an internally glazed (bacteriologically inert) tank, immersed in the storage system itself, suitable to contain domestic hot water and able to ensure maximum hygiene of the treated water, reducing the possibility of limescale deposits and facilitating cleaning.

The storage system is specifically designed to maximise the flexibility of the installation, being able to integrate the use of thermal solar system, heat generators and heat pumps. The exchange surfaces and the geometries of the tank allow obtaining excellent performance in terms of stratification, heat exchange, recovery time and domestic hot water production (up to 2700 litres/hour).

CFC-free polyurethane insulation to limit heat dissipation and consequently increase efficiency; cupel structure for easy installation. Anodic protection against corrosion.

Easy maintenance thanks to the side inspection flange. Possibility of matching with integrative heating elements.

5-year warranty.

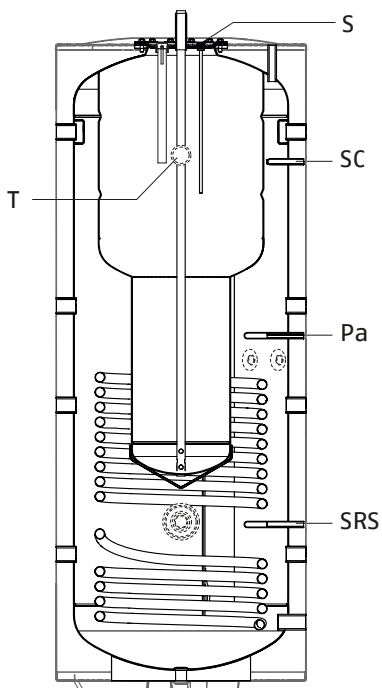
## TECHNICAL DATA

RIELLO 7200 KOMBI PLUS MODELS		550	800	1000
Cylinder type		Glazed	Glazed	Glazed
Type of inertial storage		Not glazed	Not glazed	Not glazed
Cylinder layout		Vertical	Vertical	Vertical
Exchanger layout		Vertical	Vertical	Vertical
Inertial storage capacity	l	388	560	695
Cylinder capacity	l	160	240	285
Non-solar usable volume (Vbu)	l	150	220	255
Diameter with insulation	mm	755	990	990
Diameter without insulation	mm	-	790	790
Height	mm	2055	1870	2196
Insulation thickness	mm	50	100	100
Magnesium anode	∅ x mm	22x400	32x460	32x460
Flange diameter (outer / inner)	mm	280 / 205	280 / 205	280 / 205
Coil water content	l	12.8	16	19
Coil exchange surface	m <sup>2</sup>	2.10	2.80	3.16
Coil absorbed power (*)	kW	57	76	92
Continuous production of domestic hot water (*)	l/h	660	800	1000
Withdrawal in 10' with average T 35°C and primary storage at: 80°C	l	415	515	550
70°C	l	340	500	515
60°C	l	300	415	450
Maximum cylinder operating pressure	bar	6	6	6
Maximum cylinder operating temperature	°C	99	99	99
Maximum operating pressure for inertial storage tank	bar	3	3	3
Maximum operating temperature for inertial storage tank	°C	99	99	99
Maximum coil operating pressure	bar	6	6	6
Maximum operating temperature for coil	°C	99	99	99
Heat losses	W	95	123	143
Heat dissipation UNI TS 11300-4	W/K	2.111	2.733	3.222
Net weight	kg	192	210	265
Gross weight (with packaging)	kg	-	225	281
Energy efficiency class		C	C	C

(\*) With  $\Delta T = 35^\circ\text{C}$  and primary circuit temperature =  $80-60^\circ\text{C}$

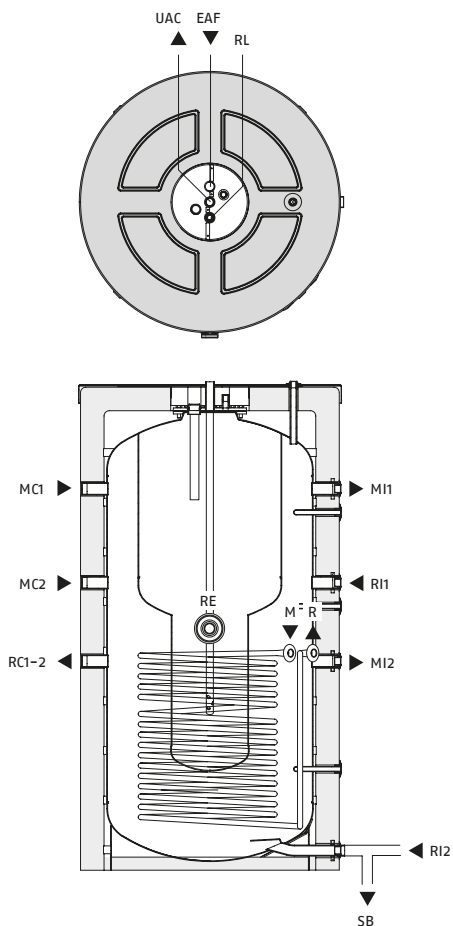
Performance obtained with a generator of adequate power regulated for a flow rate of  $3\text{ m}^3/\text{h}$  for the model 550,  $4\text{ m}^3/\text{h}$  for the model 800 and  $5\text{ m}^3/\text{h}$  for the model 1000.

**STRUCTURE**



- T Thermometer pocket (10 mm)
- SC Boiler sensor pocket (16 mm)
- S Domestic hot water sensor pocket (16 mm)
- SRS Solar regulation sensor pocket (16 mm)
- Pa Auxiliary pocket (16 mm)

**HYDRAULIC CIRCUIT**



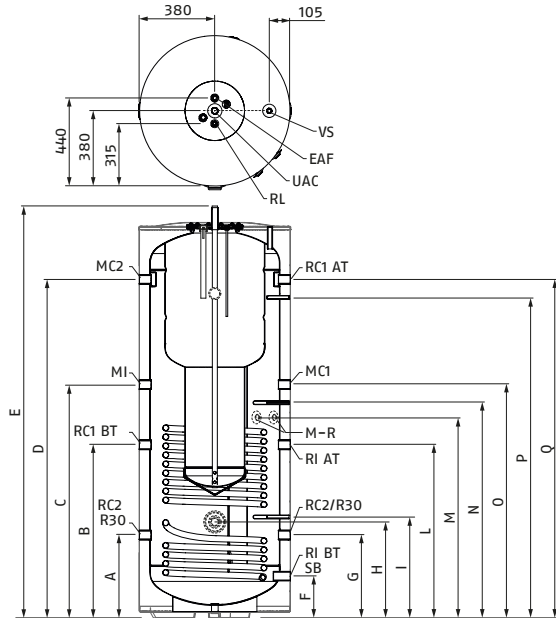
- EAF Domestic cold water inlet
- RL DHW recirculation
- UAC Domestic hot water outlet
- MC1 Boiler delivery line 1 (high temperature)
- MC2 Boiler delivery line 2 (low temperature)
- RC1-2 Boiler return line 1-2
- RI2/SB System delivery line 2 (low temperature)/Inertial storage drain
- MI2 System delivery line 2 (low temperature)
- R Collector return line
- M Collector delivery line
- RE Electric heater sleeve
- RI1 System return line 1 (high temperature)
- MI1 System delivery line 1 (high temperature)

# THERMAL SOLAR AND CYLINDERS

## Combined storage systems

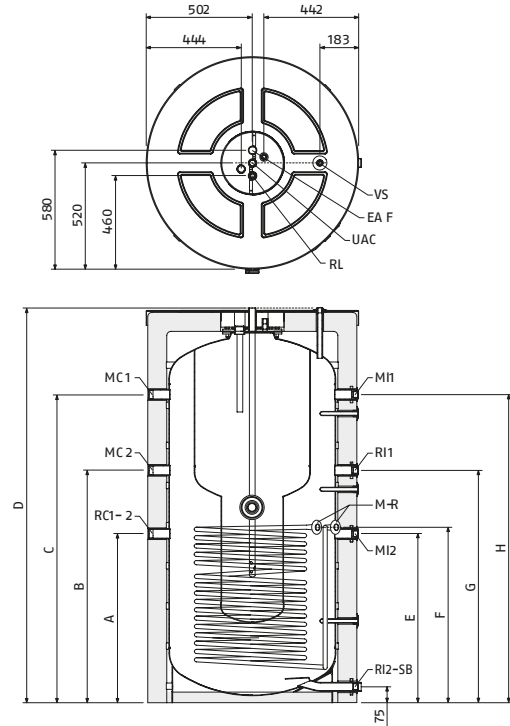
### HYDRAULIC CONNECTIONS

RIELLO 7200 KOMBI PLUS 550



- MC2 Boiler delivery line 2 (Ø 1"1/4 F)
- MI System delivery line (Ø 1"1/4 F)
- RC1 BT Boiler return line 1 LT (Ø 1"1/4 F)
- RI BT/S B System return line LT (Ø 1"1/4 F)/(Inertial storage drain)
- RI AT System return line HT (Ø 1"1/4 F)
- M Solar delivery line (Ø 1" M)
- R Collector return line (Ø 1" M)
- MC1 Boiler delivery line 1 (Ø 1"1/4 F)
- RC1 AT Boiler return line 1 AT (Ø 1"1/4 F)
- EAF Domestic cold water inlet (Ø 1" M)
- UAC Domestic hot water outlet (Ø 1" M)
- RL DHW recirculation (Ø 3/4" M)
- VS Vent valve connection (Ø 1/2" F)
- RC2/R30 Boiler return 2/30°C water return (Ø 1"1/4 F)

RIELLO 7200 KOMBI PLUS 800/1000

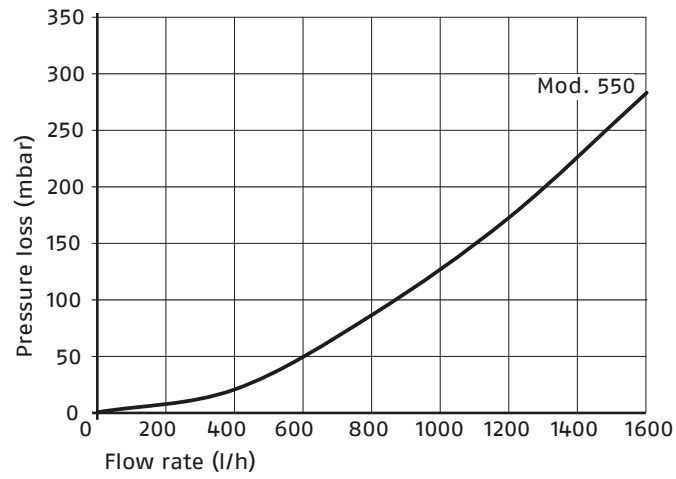


- MC1 Boiler delivery line 1 (Ø 1"1/4 F)
- MC2 Boiler delivery line 2 (Ø 1"1/4 F)
- RC1-2 Boiler return line 1-2 (Ø 1"1/4 F)
- RI2/SB System return line 2 (Ø 1"1/4 M)/(Inertial storage drain)
- MI2 System delivery line 2 (Ø 1"1/4 F)
- M Solar delivery line (Ø 1" M)
- R Collector return line (Ø 1" M)
- RI1 System return line 1 (Ø 1"1/4 F)
- MI1 System delivery line 1 (Ø 1"1/4 F)
- EAF Domestic cold water inlet (Ø 1" M)
- UAC Domestic hot water outlet (Ø 1" M)
- RL DHW recirculation (Ø 3/4" M)
- VS Vent valve connection (Ø 1/2" F)

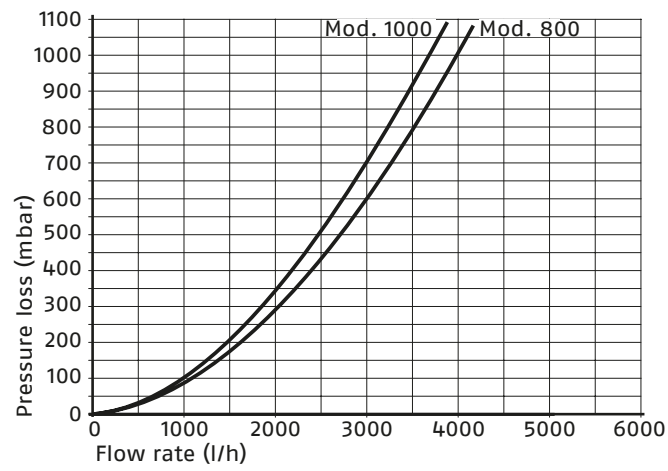
MODELS		7200 Kombi Plus 550	7200 Kombi Plus 800	7200 Kombi Plus 1000
A	mm	800	800	960
B	mm	1100	1100	1260
C	mm	1460	1460	1785
D	mm	1870	1870	2196
E	mm	800	800	960
F	mm	830	830	925
G	mm	1100	1100	1260
H	mm	1460	1460	1785
I	mm	503		
L	mm	863		
M	mm	960		
N	mm	1073		
O	mm	1163		
P	mm	1598		
Q	mm	1688		

**PRESSURE LOSSES - COIL**

RIELLO 7200 KOMBI PLUS 550



RIELLO 7200 KOMBI PLUS 800/1000



## THERMAL SOLAR AND CYLINDERS

### Combined storage systems

#### RIELLO 7200 KOMBI PLUS

##### CONSTRUCTION DESCRIPTION FOR CONCISE SPECIFICATIONS

Combined "tank-in-tank" storage system for production of domestic hot water and heating integration using solar energy or another renewable energy source, with a total volume of 550 (548 effective), 800 (800 effective) or 1000 (980 effective) litres. Vertical internal cylinder ("bain-marie" installation) with a capacity of 160, 240 and 285 litres respectively.

##### CONSTRUCTION DESCRIPTION FOR SPECIFICATIONS

The combined storage system for domestic hot water production and heating integration in solar systems (or with other renewable sources) is characterised by:

- "Tank in tank" structure
- Steel construction with vertical development to facilitate stratification and maximise the performance of the solar system or other connected renewable energy source
- Vertical internal cylinder ("bain-marie" installation), internally double-glazed at 875°C according to the Graslining Bayer process in accordance with DIN 4753
- Magnesium anode for protection against corrosion, dimensions: 22 x 400 mm (for size 550) or 32 x 460 mm (for sizes 800 and 1000)
- Lower coil with increased surface (to maximise heat exchange and optimise the efficiency of the solar system) of 2.10 m<sup>2</sup> for model 550, 2.80 m<sup>2</sup> for model 800 and 3.16 m<sup>2</sup> for model 1000
- Upper flange for cylinder inspection and cleaning
- Sensor-holder pockets (both for domestic hot water and technical water)
- Connections for heating integration with heat generator
- Auxiliary sleeve for 1"1/2 F electric heater (optional)
- Air vent valve connection
- Maximum cylinder operating pressure 6 bar and maximum operating temperature 99°C
- Maximum coil operating pressure 6 bar and maximum operating temperature 99°C
- Maximum inertial storage system operating pressure 3 bar and maximum operating temperature 99°C
- Insulation made of 50 mm closed-cell polyurethane foam injected in the interspace between the aesthetic shell and the steel shell for model 550 and 4 self-supporting interlocking segmented cupels (supplied already disassembled to facilitate the positioning in the heating plant and the passage through the doors), easily installable on site without the need for straps, with a total thickness of 100 mm for models 800 and 1000.
- Covering with ABS RAL9006 embossed shell (rigidly foamed for model 550, supplied disassembled and easy to install on site thanks to the interlocking flaps for models 800 and 1000)
- Diameter compatible for passage through doors with a useful width of 800 mm
- Energy class "C" for all models with the following dissipation values:
  - 95 W (2.111 W/K) for model 550
  - 123 W (2.733 W/K) for model 800
  - 143 W (3.222 W/K) for model 1000
- Compliant with:
  - DIN 4753-3
  - UNI EN 12897
  - European regulation 813:2013

##### MATERIAL SUPPLIED

- Instruction manual
- Warranty certificate and barcode label
- Spare parts catalogue
- Energy label





RIELLO S.p.A.  
Via Ing. Pilade Riello, 7  
37045 Legnago (VR) Italy  
tel. +39 0442 630111  
[www.riello.com](http://www.riello.com)

The company is constantly working to perfect its entire production range, so the design and size characteristics, technical data, equipment and accessories may vary.

**RIELLO**