



LPG Kit

CODE	MODEL
20121154	RS-RLS 280/E RS-RLS 280/EV

1 General warnings

1.1 Guarantee and responsibility

The rights to the guarantee and the responsibility will no longer be valid in the event of damage to things or injury to people, if such damage/injury was due to any of the following causes:

- intervention of unqualified personnel;
- carrying out of unauthorised modifications on the equipment;
- powering of the burner with unsuitable fuels;
- faults in the fuel supply system;
- repairs and/or overhauls incorrectly carried out;
- use of non-original components, including spare parts, kits, accessories and optional;
- force majeure.

The manufacturer furthermore declines any and every responsibility for the failure to observe the contents of this manual.

- Personnel must always use the personal protective equipment envisaged by legislation and follow the indications given in this manual.
- Personnel must observe all the danger and caution indications shown on the machine.
- Personnel must not carry out, on their own initiative, operations or interventions that are not within their province.
- Personnel must inform their superiors of every problem or dangerous situation that may arise.

1.2 Installation safety notes



It is obligatory to carry out all installation, maintenance and dismantling operations with the electricity supply disconnected.



Isolate the fuel supply.



The installation must be carried out by qualified personnel, as indicated in this manual and in compliance with the standards and legal requisites in force.



After removing all the packaging, check the integrity of the contents. If in doubt, do not use the spare parts kit; contact the supplier.



Wait for the components in contact with heat sources to cool down completely.



After carrying out maintenance, cleaning or checking operations, reassemble the cover and all the safety and protection devices of the burner.

2 Kit for conversion of combustion head

2.1 Kit description

The LPG kit allows the burners fitted for burning natural gas. to operate on LPG. The kit is composed of:

Description	Quantity
Gas pipes	5
Fixing screws for pipe	5
Gas nozzles	6
Instructions	1

Tab. A



Before starting the kit installation operations, get a suitable lifting system ready.



Be careful as some drops of fuel may leak out during the kit installation phase.

2.2 Technical features

Thermal power	MBtu/hr	2600 - 10500
Fuel		Commercial LPG
		GCV 26.47 kWh/Nm ³
		(C ₃ H ₈ = 93 - 94%)
		2.55 MBtu/CU.FT.

Tab. B

2.3 Conversion



DANGER

Disconnect the electrical supply from the burner by means of the main system switch.

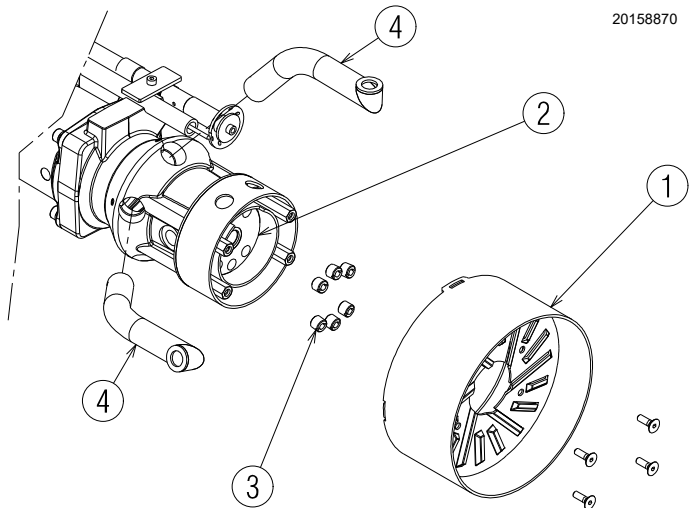


DANGER

Close the fuel interception tap.

Proceed as follows:

- Place the stainless steel cylinder 1)(Fig. 1) outside the spray nozzle 2).
- Replace the following material with the standard equipment supplied:
 - 6 gas nozzles 3);
 - the outer gas tubes 4).



20158870

Fig. 1

2.4 Combustion head setting

The same for both LPG and natural gas. Please refer to the burner instruction manual for the combustion head adjustment.

Gas pressure

The Tab. C shows minimum pressure losses along the gas supply line depending on the maximum burner output operation.

Column 1

Pressure loss at combustion head.

Gas pressure measured at the test point 1)(Fig. 2), with:

- combustion chamber at 0 "WC;
- burner working at maximum output;
- combustion head adjusted as in the burner instruction manual.

Column 2

Pressure loss at gas butterfly valve 2)(Fig. 2) with maximum opening: 90°.

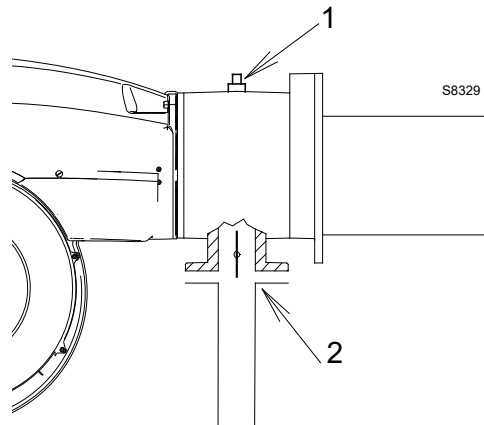


Fig. 2

Mbtu/hr (GCV)	1 Δp ("WC)	2 Δp ("WC)
2600	2.0	0.01
3500	3.7	0.02
4500	6.1	0.03
5500	9.1	0.08
6500	12.8	0.17
7500	14.3	0.23
8500	18.6	0.46
9500	23.0	0.57
10500	28.2	0.7

Tab. C

Note

See the accompanying instructions for the adjustment of the gas train.

2.5 Firing rate

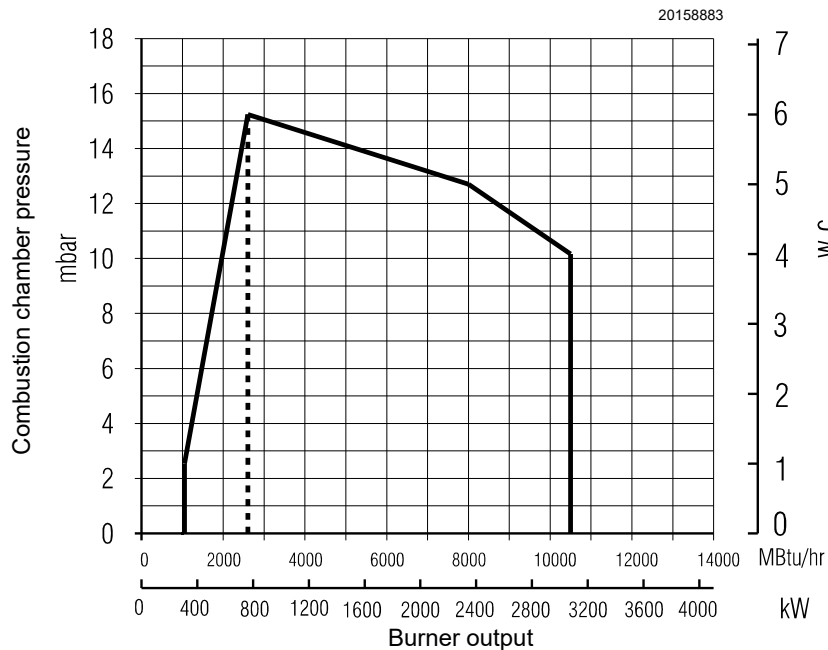


Fig. 3

