



LPG Kit

CODE	MODEL
3010270	RS 28/M-/E-/EV
3010271	RS 38/M-/E-/EV
3010272	RS 50/M-/E-/EV



Original instructions

1 General warnings

1.1 Guarantee and responsibility

The rights to the guarantee and the responsibility will no longer be valid in the event of damage to things or injury to people, if such damage/injury was due to any of the following causes:

- intervention of unqualified personnel;
- carrying out of unauthorised modifications on the equipment;
- powering of the burner with unsuitable fuels;
- faults in the fuel supply system;
- repairs and/or overhauls incorrectly carried out;
- use of non-original components, including spare parts, kits, accessories and optional;
- force majeure.

The manufacturer furthermore declines any and every responsibility for the failure to observe the contents of this manual.

- Personnel must always use the personal protective equipment envisaged by legislation and follow the indications given in this manual.
- Personnel must observe all the danger and caution indications shown on the machine.
- Personnel must not carry out, on their own initiative, operations or interventions that are not within their province.
- Personnel must inform their superiors of every problem or dangerous situation that may arise.

1.2 Installation safety notes



It is obligatory to carry out all installation, maintenance and dismantling operations with the electricity supply disconnected.



Isolate the fuel supply.



The installation must be carried out by qualified personnel, as indicated in this manual and in compliance with the standards and legal requisites in force.



After removing all the packaging, check the integrity of the contents. If in doubt, do not use the spare parts kit; contact the supplier.



Wait for the components in contact with heat sources to cool down completely.



After carrying out maintenance, cleaning or checking operations, reassemble the cover and all the safety and protection devices of the burner.

2 LPG kit

2.1 Kit description

The kit allows the burners, to operate on LPG.

The kit is composed of:

Description	Quantity
Gas distributor	1
Disc	1
Self-adhesive label	1
Instructions	1

Tab. A



Before starting the kit installation operations, get a suitable lifting system ready.



Be careful as some drops of fuel may leak out during the kit installation phase.



WARNING

Apply the self-adhesive label near the burner data plate.

2.2 Technical features

Model		RS 28	RS 38	RS 50
Thermal power	MBtu/hr	358 - 1232	437 - 1665	549 - 1986
Fuel	Commercial LPG	GCV 26.47 kWh/Nm ³ (C ₃ H ₈ = 93 - 94%) 2.55 MBtu/CU.FT.		
Minimum gas pressure	"WC	8.7	11.4	14.2
		measured on the coupling, with 0 "WC resistance in the combustion-chamber and gas with gross calorific value of 2.55 MBtu/CU.FT.		
Maximum gas pressure	"WC	142		

Tab. B

2.3 Conversion



DANGER

Disconnect the electrical supply from the burner by means of the main system switch.



DANGER

Close the fuel interception tap.

Proceed as follows:

- On the combustion head: replace the gas distributor 1) with that one supplied for LPG 2).

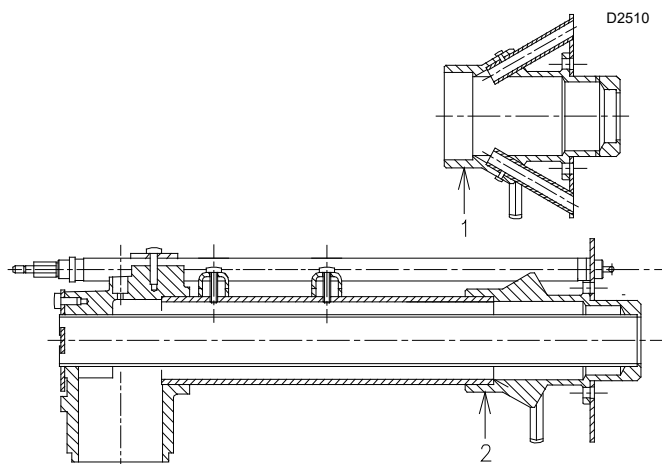


Fig. 1

2.4 Combustion head setting

Air setting: screw 1)(Fig. 2 - **A**): unchanged
Gas setting: disc 1) (Fig. 2 - **B**): always set on 0.

D1327

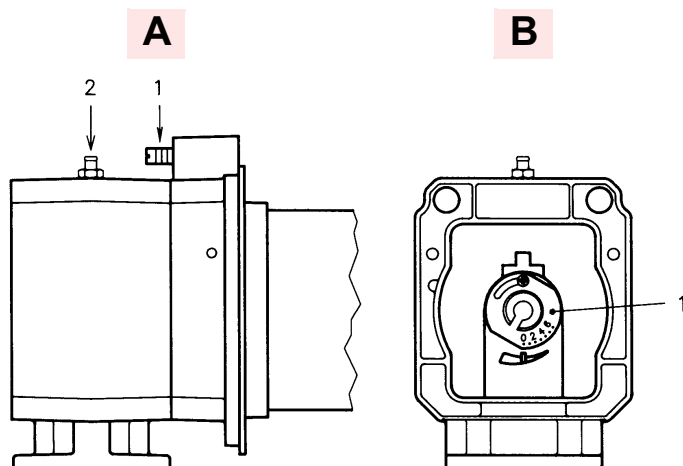


Fig. 2

2.5 Combustion chamber pressure

The pressure in the combustion chamber is the same as for natural gas operation.



For pressure levels different from those indicated above, please contact the Technical Office.

2.6 Gas pressure - output

Pressure measured at the coupling with combustion chamber at 0 "WC (Tab. C).

If the combustion chamber is pressurized, the required gas-pressure is that shown on the table plus the pressurization value.

	Mbtu/hr (GCV)	("WC)
RS 28	500	3.6
	600	4.4
	700	5.2
	800	6.0
	900	6.8
	1000	7.6
	1100	8.4
	1200	9.2
RS 38	800	4.8
	1000	6.4
	1200	8.0
	1300	8.8
	1400	9.6
	1500	10.4
	1600	11.2
	1700	12.0
RS 50	1000	5.3
	1200	7.1
	1400	8.9
	1500	9.8
	1600	10.7
	1700	11.6
	1800	12.5
	1900	13.4

Tab. C

2.7 Gas train

The gas trains for LPG operation are the same as those used for natural gas.

2.8 Electrical wiring

For the electrical wiring to the burner, refer to the burner instruction manual.

