

WARNING: This start-up guide does not supersede or replace the Riello Condexa Pro Installation & Operation Manual in anyway. The Riello Condexa Pro Installation & Operation Manual must be read in it's entirety. Failure to do so may result in substantial property damage, severe injury or death.

Condexa Pro

US QUICKSTART GUIDE

RIELLO



CONTENTS

1	General	3
1.1	Website downloads	3
1.2	Key Symbols	3
2	Initial Checks	3
2.1	Incoming Power and Device Conections	3
2.2	Incoming Gas Supply	3
2.3	Dip Switch Settings	3
3	FILLING THE BOILER WITH WATER	4
3.1	Filling Module	4
4	COMMISSIONING MODULES	4
4.1	Combustion Tuning	4
4.2	Testing Safeties	4
5	SETTING UP CONTROLS	5
5.1	Control Mode	5
5.2	Boiler Wiring Connections	5
5.3	Boiler & Module Rotation	5
5.4	Boiler Control	5
6	ERRORS	6
6.1	Multimeter Checks	6
6.2	Types Of Errors	6
6.3	Common Errors	7
7	NOTES	9

1 GENERAL

1.1 Website downloads

1. go to the following link and download "CommercialBoilers" form <https://www.riello.com/north-america/service/technical-support/commissioning>

1.2 Key Symbols

PAY ATTENTION TO THESE TERMS

⚠ DANGER: Indicates the presence of immediate hazards which will cause severe personal injury, death or substantial property damage if ignored.

⚠ WARNING: Indicates the presence of hazards or unsafe practices which could cause severe personal injury, death or substantial property damage if ignored.

⚠ CAUTION: Indicates the presence of hazards or unsafe practices which could cause minor personal injury or product or property damage if ignored.

⚠ NOTICE: Indicates special instructions on installation, operation, or maintenance which are important but not related to personal injury hazards.

2 INITIAL CHECKS

⚠ DANGER: Improper installation and/or operation could create carbon monoxide gas in flue gases which could cause serious injury, property damage, or death. Improper installation and/or operation will void the warranty.

2.1 Incoming Power and Device Connections

1. Check and ensure correct incoming power (Power as stated on boiler label)

Single phase : L-N, N-G.

⚠ WARNING: Risk of electrical shock. Use caution when testing the power sources. Failure to do so may result in severe personal injury or death.

2. Ensure all relevant system connections are tied into low voltage terminal strip and high voltage terminal strip of the boiler.

⚠ NOTE: All line voltage outputs are 120V and require a relay to power external devices.

2.2 Incoming Gas Supply

1. Check for recommended supply gas pressure, upstream of the boiler:
 - For natural gas: 4.0" wc. minimum, 14" wc. maximum.
 - For propane gas: 8.0" wc. minimum, 14" wc. maximum.

⚠ WARNING: Ensure the gas supply line has been pressure tested and is free from leaks. Failure to do so may result in substantial property damage, severe personal injury or death.

⚠ DANGER: Flammable gas explodes. Beware if you smell gas: there may be an explosion hazard!

2. Ensure all gas connections have been pressure tested. Soap test connections downstream of gas valve while module is running.

⚠ NOTE: Check minimum and dynamic pressure when all modules are at high fire.

2.3 Dip Switch Settings

1. Set S1 dip switches on boiler controllers (Fig. 1)
 - a. S1 dip switches to be set in off position on all boilers.

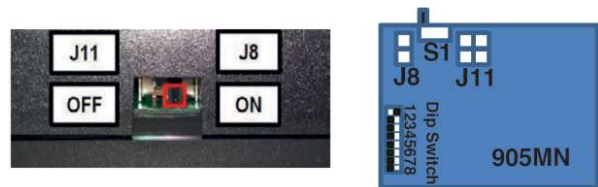


Fig.1 Setting Controller S1 Dipswitch

2. Set Address Dip Switch on end of control. (Fig 2)
 - a. If using single boiler without system sensor: leave all dip switches in the off position.
 - b. If using single boiler with system sensor connected: turn the number 1 dipswitch on.
 - c. If using multiple boilers: system sensor is required and turn on corresponding dipswitch for boiler position.
 - d. If using multiple boilers with primary and secondary sensors: turn on corresponding dipswitch for boiler position and see section 5.2 of QSG for wiring connections and boiler addressing information.



Fig. 2 Addressing Dipswitch

FILLING THE BOILER WITH WATER & COMMISSIONING MODULES

3 FILLING THE BOILER WITH WATER

CAUTION: Before commissioning ensure all hydronic water connections are tight and free from leaks.

3.1 Filling Module

To Fill the heating system, proceed as follows:

1. Open any automatic air vents in the heating system
2. Open the fill valve and proceed to fill the heating system and boiler. The heating system water pressure must be higher than 7.5PSI.
3. Check that there is no water leaking from the fittings.
4. Check the pressure during the purging process. If the pressure has dropped, reopen the fill valve to bring the pressure back to the desired value.

4 COMMISSIONING MODULE

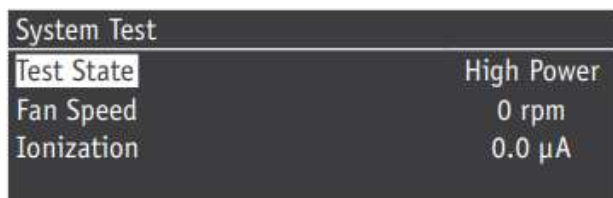
DANGER: Ensure all venting has been fastened and secured in accordance with the venting manufactures instructions, the Riello Array SE Installation & Operation Manual and the local authority having jurisdiction. Failure to do so may result in severe injury or death.

WARNING: Before commissioning ensure the Riello Array SE Installation and Operation Manual has been read in its entirety. Failure to do so may result in substantial property damage, severe injury or death.

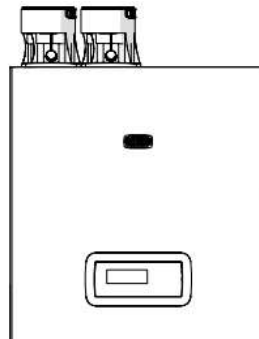
WARNING: Before commissioning ensure all gas connections have been pressure tested; failure to do so may result in substantial property damage, severe injury or death.

4.1 Combustion Tuning

1. Make sure to disable the boiler from operation by opening the Enable circuit either from the automation system or by removing the wires from the terminal strip located on the boiler.
2. Press Menu on the boiler screen and select SYSTEM TEST.
3. Move cursor to change Test State. You can select: LOW POWER, IGNITION POWER OR HIGH POWER.



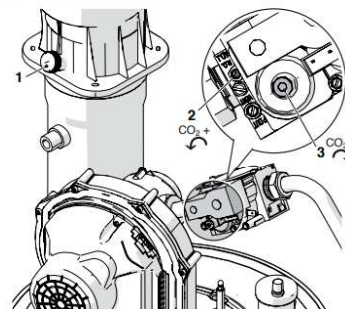
Once boiler has lit and flame has been established, select HIGH POWER in the SYSTEM TEST menu. Let boiler operate for a couple of minutes to allow combustion to stabilize. Insert probe from combustion analyzer into the exhaust port on the flue pipe connector on top of the boiler.



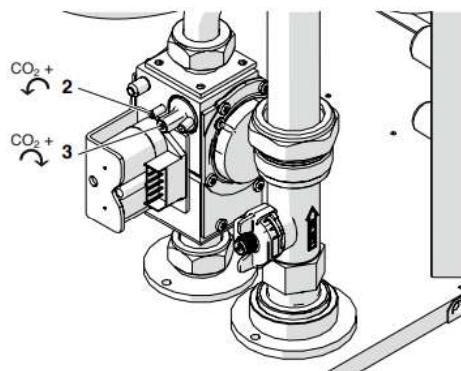
Adjust gas valve to achieve recommended O2 level of 4.5-5.5%.

Once O2 level has been achieved, change TEST STATE to LOW POWER and allow boiler combustion to stabilize. Adjust low fire setting screw on gas valve to achieve recommended O2 level of 4.5-5.5%.

Version Condexa PRO NA 75 P



Version Condexa PRO NA 117 P



For both versions of boiler:
Adjustment screw 2 is for HIGH POWER
Adjustment screw 3 is for LOW POWER

4.2 Testing Safeties

All boiler safeties are tested via the SYSTEM TEST menu on the display.

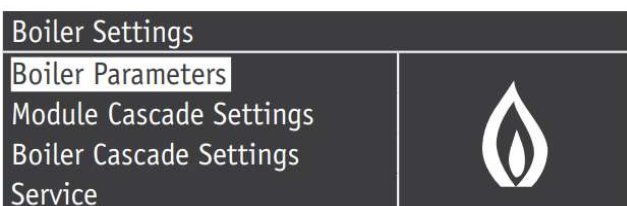
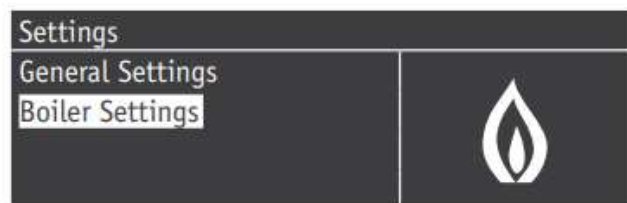
1. Select MAX THERMOSTAT to test high limit.
2. Select LWCO to test the low water cutoff.

SETTING UP CONTROLS

5 SETTING UP CONTROLS

5.1 Control Mode

1. Configure CH Mode for the boiler system by accessing the Boiler parameters menu on the display.



CH Mode	Model Type	DHW Mode	Model Type
0	Room Thermostat (Enabled/Disable)	0	Function Disabled
1	Room Thermostat + Outdoor Reset	1	Tank W/Sensor
2	Full Outdoor Reset w/ Night Setback	2	Tank with Aquastat
3	Permanent Demand w/ Night Setback		
4	Analog Input to Setpoint		

Note: Night Setback feature utilizes Enable/Disable (Room Thermostat)

5.2 Boiler Wiring Connections

1. Cascade Link:
 - a. Connect from BUS 1 (7 & 8) on Boiler 1 to BUS 2 (17 & 18) on each dependent boiler.
2. Primary Loop Sensor:
 - a. Connect the Supply Sensor (11 & 12) on Boiler 1.
3. Secondary Loop Sensor: (Optional)
 - a. Connect the Supply Sensor (11 & 12) on Boiler 2.

If not using a system sensor (only 1 boiler installed), Parameter 73 will automatically be set to "Stand Alone" and cannot be changed.

If using 1 system sensor, set Parameter 73 in boiler 1 to "Stand Alone".

If using both primary and secondary sensors, set Parameter 73 in boiler 1 to "Managing".

5.3 Boiler & Module Rotation

1. On service display go to:
Module Cascade Settings > Set Module Rotation - Parameter 84
2. Module Cascade Settings > Parameter 147 - Number of Units. Change this setting to match number of boilers connected together.

5.4 Boiler Control

Observe the boiler running in normal system conditions. If you notice the boiler overshooting setpoint and/or overcycling, the following parameter changes can be made:

Module Cascade settings: (On Managing Boiler)

- Parameter 79 (Max offset down): 10 deg f
- Parameter 80 (Max offset up): 10 deg f
- Parameter 87 (PID I): 250
- Parameter 150 (PID slewrate up): 5
- Parameter 151 (PID slewrate down): 5

Boiler Cascade settings: (On Managing Boiler of first cascade)

- Parameter 169 (Max offset down): 15 deg f
- Parameter 170 (Max offset up): 15 deg f
- Parameter 177 (PID I): 500
- Parameter 178 (PID slewrate up): 5
- Parameter 179 (PID slewrate down): 5

ERROR CODES AND TROUBLESHOOTING

6.1 Multimeter Checks

⚠ WARNING: Risk of electrical shock. Use caution when testing the power sources. Failure to do so may result in severe personal injury or death

AL Link

24VDC (with S1 Switch On and open circuit). Voltage is variable while in normal operation depending on data stream.

Pressure Switches

(ie: Gas Pressure, Water Pressure, Flue Pressure, etc) 3.3VDC while circuit is open.

Safety Switch

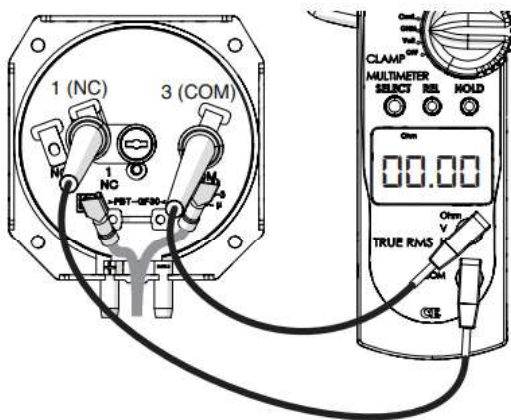
(High Limit) 24VDC while open

Flow Meter

5VDC at all times

6.2 Types Of Errors

1. Locking: Error Codes <100. These are hard lockouts. Manual reset is required to clear these errors. Reset button will be available on the Touchscreen, PB display or the individual controller.
2. Blocking: Error Codes 100<200. These errors are self-resettable errors. No reset button will be available to clear these errors. A blocking error that does not reset itself after a period of time will cause a hard lockout condition to occur. Burner/boiler will not operate until blocking error is corrected.
3. Warning: Error Codes >200. These are informational errors only. Boiler will still be functional.



ERROR CODES AND TROUBLESHOOTING

6.3 Common Errors

ERROR	CAUSE	REMEDY
EEPROM_ERROR	Loss of communication	<p>If communication errors occur with the touchscreen but not on the PB display, then the communication problem is between the touchscreen and PB display. Check all wiring to ensure proper connections. Verify proper Modbus setting on the PB display. Modbus address on the PB must always be set for Address 1 with 2 stop bits.</p> <p>If only data for module 1 is available on the touchscreen and not additional modules: check the Cascade Mode Setting in the PB display. Ensure that it is set for FULL not BASIC.</p>
1 IGNIT_ERROR	3 unsuccessful ignition attempts in a row	<p>Burner attempted to light normally but was unsuccessful. Check gas pressure. Check spark and ignitor rod. Ensure that the gas valve is functioning properly by checking for changes in gas pressure.</p>
3 SAFETY_RELAY_ERROR	High Limit Switch was detected open in Stand-by	<p>Check connections in High Limit circuit on the heat exchanger.</p>
4 BLOCKING_TOO_LONG	Control had a blocking error and was not corrected for more than 20 hours	<p>Check error log on touchscreen. The blocking error that occurred previous to current locking error will be the cause (i.e.- 163 LowExFlow).</p>
15 MAX_THERMOSTAT_ERROR	The external overheat protection is enabled or the T_Supply sensor measures a temperature of over 100°C (212°F). This is high limit.	<p>Check module water temp. Verify that pump is operating. Ensure all water valves are open. Check the supply temperature reading in the info menu.</p>
33 LWCO/AIR INLET BLOCK	This is the boiler LWCO or cabinet air switch.	<p>Check to ensure all valves are open, pump is running. Check the wiring between the controller and the LWCO probe. Ensure there is water in the boiler and free of air. Also verify that fresh air intake to the boiler is open and free from blockage.</p>
35 GAS_PRESSURE_ERROR	Gas pressure switch is open. This can either be the high or low gas pressure switch.	<p>Check gas pressure to ensure it is correct and in the recommended range for the unit. Check with as many modules on as possible to ensure supply connections are sized properly.</p>
37 FLUE_PRESSURE_LOCKING	Flue pressure switch is open for the fourth time.	<p>Check for obstruction in the flue piping. Blocking errors should be recorded prior to the locking error to occur. Check for condensate in the hose towards the flue pressure switch to ensure it isn't blocked. Check to ensure proper operation of the flue check device (clapper valve). Make sure it is not stuck in the open or closed position and in functioning properly.</p>

ERROR CODES AND TROUBLESHOOTING

ERROR	CAUSE	REMEDY
115 LOW_WATER_PRESSURE_ERROR	System water pressure is below 7.5 PSI	Ensure system water pressure is above min recommended pressure (7.5PSI). Check pressure on mounted T&P gauges. If the value is in line with the system pressure check the switch.
155 FLUE_PRESSURE_ERROR	Flue pressure switch is open	Check flue for obstructions. Clear if found. Check flue pressure to ensure flue has been installed and sized properly. Flue pressure switch default to 2.2"wc.
163 LOWEXFLOW_PROTECTION	Minimum flow of module not reached	Water flow through the module is below recommended rate. Check to ensure module pump is running. Verify valves are open. Possible air entrapment. Make sure pump is coming on. Verify proper operation of the pump relays.
200 CC_LOSS_COMMUNICATION	Cascade System: Leading burner lost communication with one of the depending burners.	Check wiring and connections between Modules. Make sure all controllers in the boilers are powered on. Make sure Parameter 147 set to correct number of modules. Check the position of the S1 switches on the dependent modules to make sure it is off.
201 CC_LOSS_BOILER_COMM	Cascade System: Leading boiler lost communication with one of the depending boilers.	Check interconnecting wiring between boiler cascades. Make sure all boilers are powered on. Make sure that Parameter 167 set to proper number of boiler cascades. Whichever boiler(s) loses communication with the Master Boiler, will enter boiler level emergency mode. Check the position of the S1 switches on the managing boiler (on) and on the dependent boiler (off) to make sure they are set properly.
203 T_SYSTEM_WRONG	T_System sensor is open or shorted	Check connections of the primary mounted sensor. This will cause Module Emergency Mode to activate. Check the value of the reading of this sensor on the info screen.
204 T_CASCADE_WRONG	T_Cascade sensor is open or shorted	Check connections of the Secondary System sensor mounted in the header. This will cause Boiler level emergency mode to activate on all boilers in the cascade. Check the value of the reading of this sensor on the info screen. If only using 1 Primary Sensor ensure that Parmater 73 on the managing boiler is set for Stand-Alone.

[illegible]





37045 Legnago (VR)
Tel. 0442630111 - Fax 044222378

RIELLO NORTH AMERICA

35 Pound Park Road
Hingham, Massachusetts
U.S.A. 02043

2165 Meadowpine Blvd
Mississauga, Ontario
Canada L5N 6H6
Tel. (905) 542-0303

www.riello.com
www.rielloboilers.com

The manufacturer strives to continuously improve all products. Appearance, dimensions, technical specifications, standard equipment and accessories are therefore subject to change without notice.